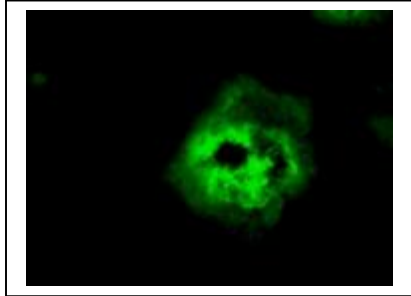
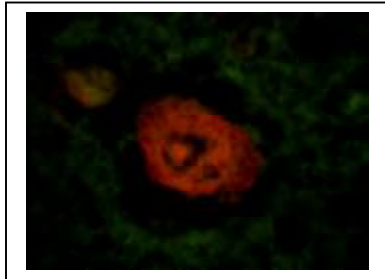


DNA stains of Normal Nerve cells (page 1) – Compared with
Nerve cells undergoing Invasion by Borrelia Cyst forms in Alzheimer’s Autopsy
Hippocampus tissue sections – Green = DNA (Double Strand DNA with Picogreen
and Red = Human DNA and RNA with Acridine stain -----Feb 12, 2006



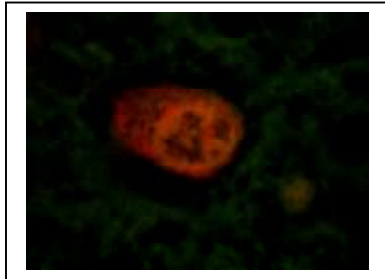
Normal Brain cell

Double Strand DNA stain (PicroGreen)
1000x magnification



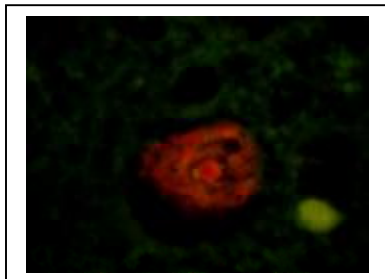
Normal Brain cell

Acridine stain (both DNA and RNA stained)
1000x magnification



Normal Brain Cell

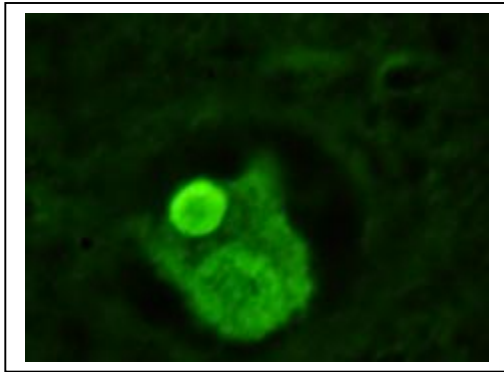
Acridine Stain
1000x magnification



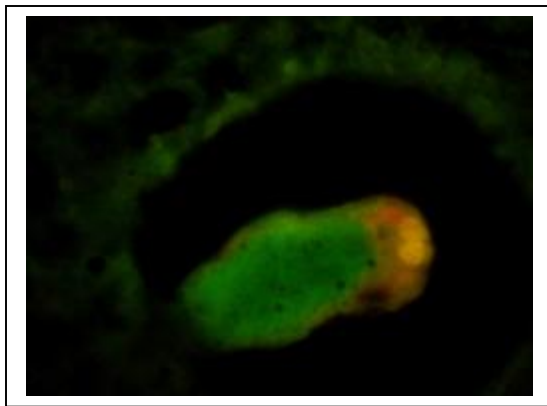
Normal Brain Cell

Acridine Stain
1000x magnification

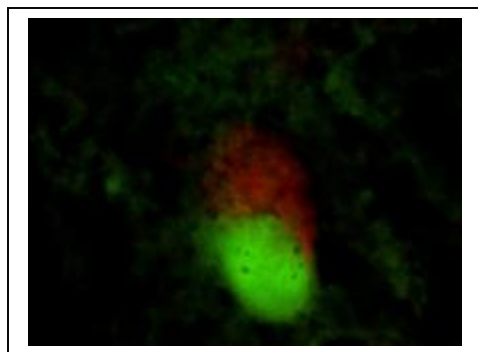
DNA stains of Normal Nerve cells (page 1) – Compared with
 Nerve cells undergoing Invasion by Borrelia Cyst forms in Alzheimer’s Autopsy
 Hippocampus tissue sections – Green = DNA (Double Strand DNA with Picogreen
 and Red = Human DNA and RNA with Acridine stain -----Feb 12, 2006



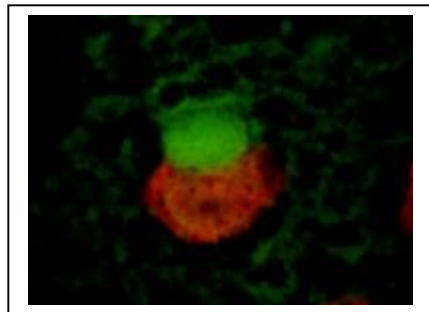
Cyst invading a Nerve Cell
 DNA Stain (double strand stain)
 PicoGreen
 10 o clock position = Cyst
 6 o clock position = nucleus of cell



Cyst (Green PicoGreen stain)
 invading cell
 Cell stained in Red (Acridine)
 1000x magnification



Cyst (Green PicoGreen stain)
 Invading
 Nerve cell
 Alzheimer’s disease
 1000x magnification



Cyst (Green PicoGreen stain)
 invading Nerve cell
 Alzheimer’s disease

DNA stains of Normal Nerve cells (page 1) – Compared with
Nerve cells undergoing Invasion by Borrelia Cyst forms in Alzheimer’s Autopsy
Hippocampus tissue sections – Green = DNA (Double Strand DNA with Picogreen
and Red = Human DNA and RNA with Acridine stain -----Feb 12, 2006
1000x magnification